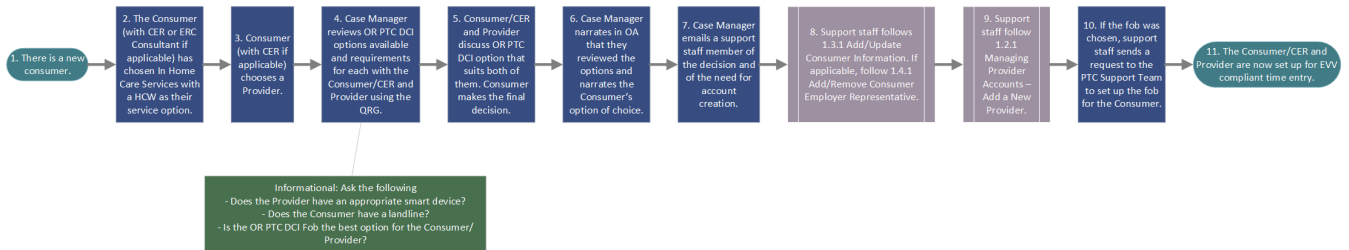


Business Process - Setting Up EVV Options with Consumers and Providers

PROVIDER TIME CAPTURE (PTC) PROJECT

1.7.0 Process for Staff, Consumers, and Providers: Setting Up EVV Options with Consumers and Providers



Legend

Acronyms
 CER = Consumer Employer Representative (Guardian profile in OR PTC DCI)
 ERC = Employer Resource Connection

Notes
 QRG = Quick Reference Guide
 OA = Oregon ACCESS

START / END PROCESS STEP SUB-PROC.

1.7.0 Set Up EVV Options with Consumers and Providers

Last Modified By Krista Coleman

Date Last Modified: March 18, 2021

1.7.0 Setting Up EVV Options with Consumers and Providers.pdf

Related articles

- [Business Process - Change in Authorizations](#)
- [Staff Learning Materials Catalog](#)
- [QRG - Explanation of PTC Errors in Mainframe](#)
- [Staff QRG - Notes Functionality](#)
- [Guide - Web Portal](#)