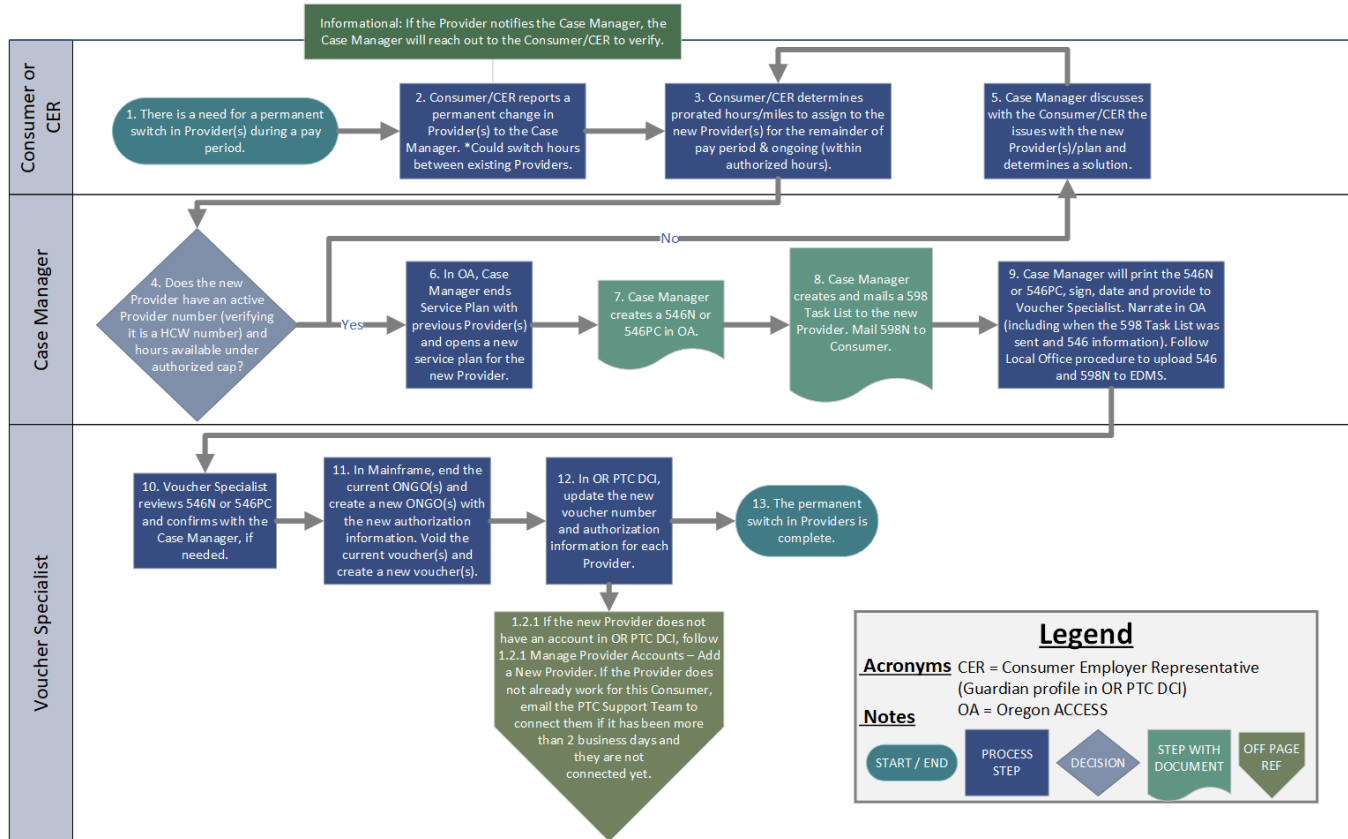


# Business Process - Provider Switches During Pay Period Permanently

## PROVIDER TIME CAPTURE (PTC) PROJECT

### 1.1.2 Process for Staff and Consumers: Provider Switches During Pay Period Permanently



1.1.2 Provider Switches During Pay Period Permanently

Last Modified By Ryanne Thomas

Date Last Modified February 11, 2022

## 1.1.2 Provider Switches During Pay Period - Permanently.pdf

### Related articles

- [Business Process - Change in Authorizations](#)
- [Staff Learning Materials Catalog](#)
- [QRG - Explanation of PTC Errors in Mainframe](#)
- [Staff QRG - Notes Functionality](#)
- [Guide - Web Portal](#)