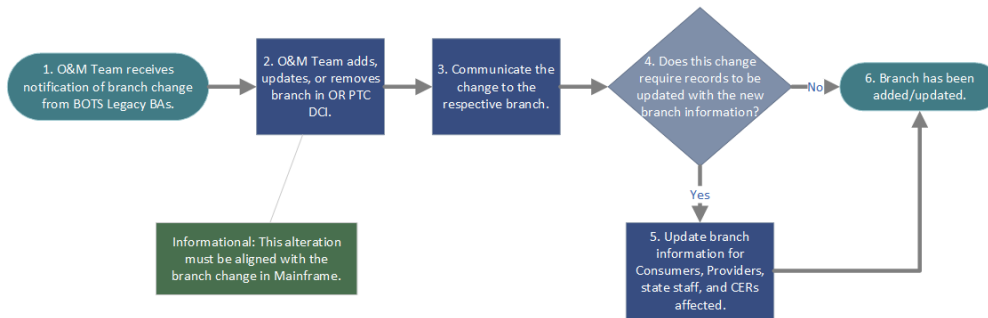


Business Process - Manually Adding/Updating Branch Information

PROVIDER TIME CAPTURE (PTC) PROJECT

1.6.0 Process for O&M Team: Manually Adding/Updating Branch Information



Legend

Acronyms O&M = Operations and Maintenance
CER = Consumer Employer Representative (Guardian profile in OR PTC DCI)

Notes

START / END PROCESS STEP DECISION

1.6.0 Manually Adding/Updating Branch Information

Last Modified By Krista Coleman

Date Last Modified: March 25, 2021

1.6.0 Manually Adding or Updating Branch Info.pdf

Related articles

- [Business Process - Change in Authorizations](#)
- [Staff Learning Materials Catalog](#)
- [QRG - Explanation of PTC Errors in Mainframe](#)
- [Staff QRG - Notes Functionality](#)
- [Guide - Web Portal](#)