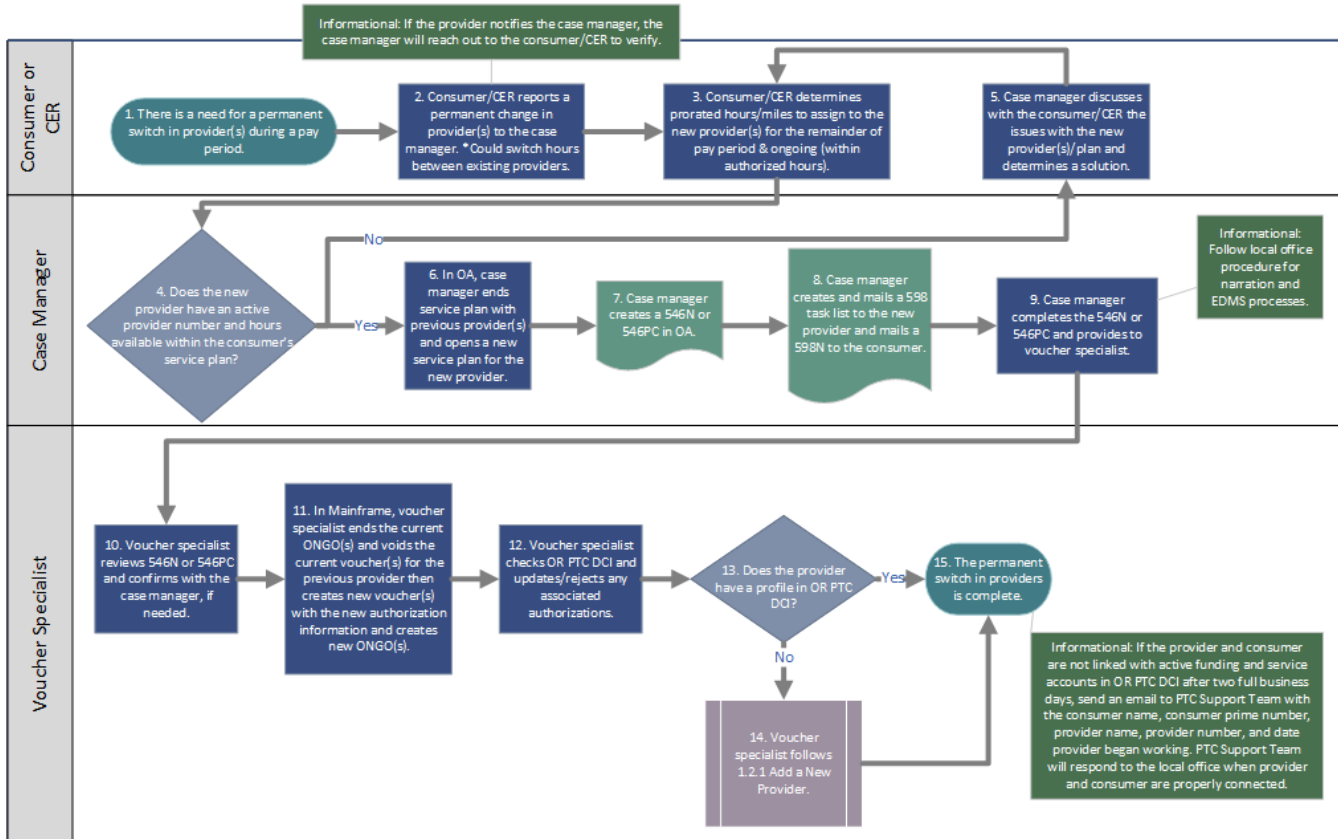


Business Process - Provider Switches During Pay Period Permanently

PROVIDER TIME CAPTURE (PTC) PROJECT

1.1.2 Process for Staff and Consumers: Provider Switches During Pay Period Permanently



Legend

Acronyms

CER = Consumer Employer Representative (Guardian profile in OR PTC DCI)

OA = Oregon ACCESS

EDMS = Electronic Document Management System

START / END

PROCESS STEP

SUB-PROC.

DECISION

STEP WITH DOCUMENT

Links + Resources



**PTC Support
Team Email**



**Authorizations
Management
Guide**



**Updating an
Authorization
QRG**



**Explanation
of PTC Errors
in Mainframe**



**1.2.1 Add a
New Provider**



**1.1.5 Relinking
a Provider and
Consumer**

Related articles

- [Guide - OR PTC User Settings Guide](#)
- [Staff Learning Materials Catalog](#)
- [Guide - Time Entry Management](#)
- [Online Learning - Recovering a Forgotten Password](#)
- [Business Process - Managing Staff Profiles](#)