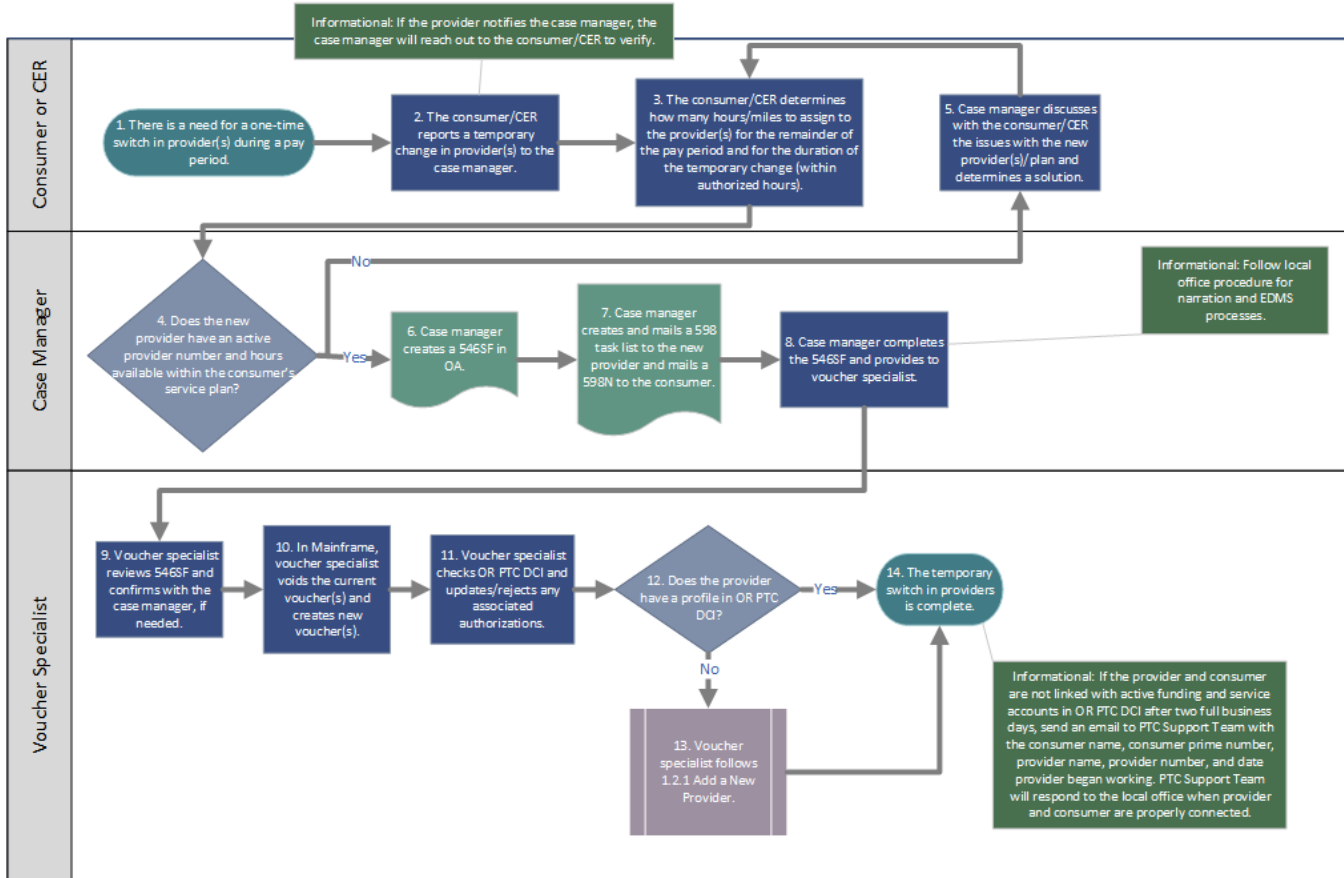


# Business Process - Providers Switches During Pay Period Temporarily

## PROVIDER TIME CAPTURE (PTC) PROJECT

### 1.1.3 Process for Staff and Consumers: Provider Switches During a Pay Period Temporarily



## Legend

### Acronyms

CER = Consumer Employer Representative (Guardian profile in OR PTC DCI)

OA = Oregon ACCESS

EDMS = Electronic Document Management System



#### Links + Resources



**PTC Support  
Team Email**



**Authorizations  
Management  
Guide**



**Updating an  
Authorization  
QRG**



**Explanation  
of PTC Errors  
in Mainframe**



**1.2.1 Add a  
New Provider**



**1.1.5 Relinking  
a Provider and  
Consumer**

#### Related articles

- [Guide - OR PTC User Settings Guide](#)
- [Staff Learning Materials Catalog](#)
- [Guide - Time Entry Management](#)
- [Online Learning - Recovering a Forgotten Password](#)
- [Business Process - Managing Staff Profiles](#)